

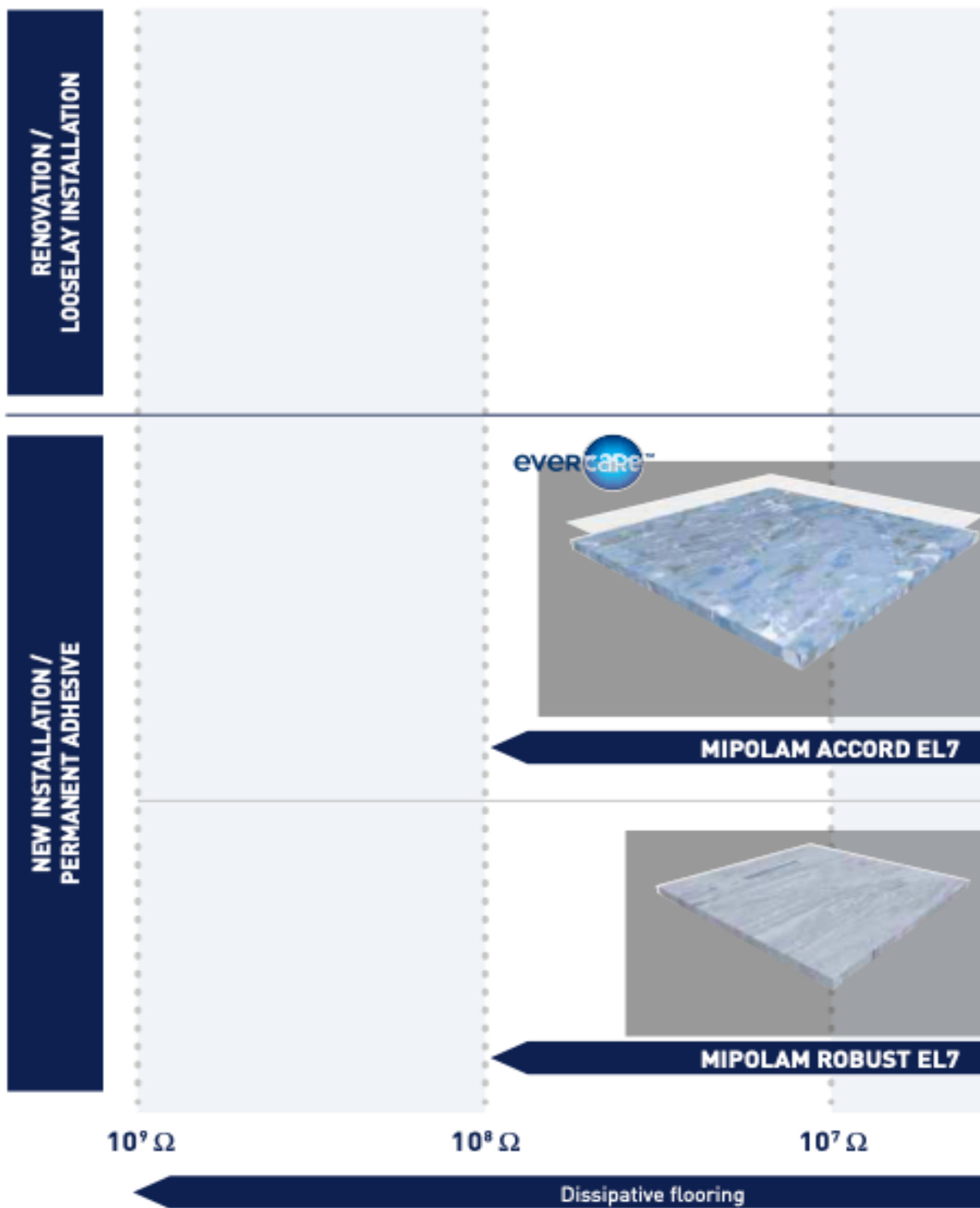
# ESD SOLUTIONS

gerflor.com



**Gerflor**<sup>®</sup>  
theflooringgroup

# ESD SOLUTIONS



evercare™



GTI EL5

MIPOLAM ELEGANCE EL5

MIPOLAM TECHNIC EL5

$10^6 \Omega$

$10^5 \Omega$

$5 \times 10^4 \Omega$

$10^4 \Omega$

Electrical resistance  
(EN 1081)

Conductive flooring

## Static electricity

Static electricity is everywhere. At its most spectacular expression appear storms and lightnings. Static Electricity is also generated by friction and separation of two materials where one is nonconductor. This produces a build-up of electric charge on the surface of each material with one becoming positively and the other becoming negatively charged.

The electrostatic charges naturally seek to balance themselves out. Electro Static Discharge (ESD) occurs as soon as contact is made with a conductive element.

Static electricity is harmless to humans. However, it can pose serious threats to sensitive equipment. Vulnerable electronic equipment can be subject to a reduction of sensitivity and even complete failure in the event of an uncontrolled discharge of static energy.

Typical concerned areas include healthcare environments such as operating theatres and intensive care wards, electronics industry and industrial clean rooms.



## ESD risks

In technical areas and industrial premises, electrostatic discharges lead to numerous problems. The most frequent among them are:

- **degradation of sensitive electronic components** leading to a loss of performance which is occasionally impossible to detect during routine quality control
- **deterioration of production conditions:** disruption of sensitive electronic equipment, aggregation of dust, reduction in line output, etc.
- **risk to human safety.**

In the electronic industry, 30-50% of faults found in components are due to uncontrolled Electro Static Discharge (ESD).

In particular circumstances, close packing of components can have a marked increase in the sensitivity of products and charges as little as 10 volts may be sufficient to increase risk.

This is most notable in restricted industrial areas where ESD can cause explosions. This may be due to the presence of flammable or explosive mixtures but also in areas where fine powders are subject to friction such as the bakery industry where fire is a permanent threat.

## Controlling ESD

To reduce the risk from static electricity, various solutions can be effective including: earthing points for people and equipment, static control packaging or ionisation, all having the intention of:

- **Limiting charges**
- **Controlling discharges**

An overall ESD risk assessment must be carried out in order to take into account the professional environment, the risks linked to procedures and the sensitivity and susceptibility of the components.

The most employed method for limiting electrostatic charge is by grounding people and objects. The use of electroconductive floorings combined with conductive footwear constitutes a key part in managing this phenomenon. It guarantees a long-term, low level and harmless discharge to people.

## Mipolam EL floorings

**Mipolam EL** floorings offer a complete range of products, **conductive (EL5)** and **dissipative (EL7)**. According to the type of requirements they ensure:

- the protection of electronic equipment and components
- the protection of people against electro-static discharge
- the protection of premises against explosive risks

Used in conjunction with conductive footwear, Mipolam EL floorings guarantee the highest level of protection against ESD risk due to their low generation of charges (< 100 to < 20 V according to the IEC 61340 - 4 - 5) and to the effective elimination of charges over long term.

# APPLICATIONS: A SOLUTION FOR ALL MARKETS



LABORATORIES - MIPOLAM EL & GTI EL5



ESD AREAS - MIPOLAM EL & GTI EL5



DATA ROOMS - DATA CENTERS -  
MIPOLAM EL & GTI EL5



AGV AREAS - GTI EL 5 ONLY



CLEANROOMS & HEALTHCARE ENVIRONMENTS -  
MIPOLAM EL & GTI EL5

# MIPOLAM EL BENEFITS



## Controlling discharges

- Mipolam EL floorcoverings guarantee the lasting elimination of electrostatic charges while taking into account people's safety.

## Low accumulation of charges

- Mipolam EL floorcoverings guarantee a low accumulation of electrostatic charges to people and equipment.

## Mechanical resistance

- The homogeneous and compact surface provides enduring resistance to static and dynamic loads.

## Chemical resistance

- Mipolam EL floorcoverings display excellent resistance to chemical products such as detergents, acids and alkaline products.

## Minimum gas emission

- Low VOC emissions (<10  $\mu\text{g}/\text{m}^3$ ).





## Decontamination

- Mipolam EL floorcoverings are rated as “good” in compliance with the nuclear decontamination standard ISO 8690.

## Fully hygienic

- Floorcovering is non-absorbent, impervious and non-porous.
- Can be hot welded and installed with a covered skirting for easy cleaning.
- Mipolam Elegance EL5 and Mipolam Accord EL7 are treated with Evercare™ ensuring easy maintenance, no wax for life, stain barrier, chemical resistance.

## Access flooring with laminar flow

- Mipolam EL floorings and GTI EL5 tiles are especially well suited to “high-tech” applications. They are designed to be compatible with access flooring in cleanrooms with laminar flow.

## Low risk of particle contamination

- The Mipolam EL tile meets the high requirements for particle contamination set by electronic industry due to the low release of carbon particles.



# MIPOLAM EL

## DISSIPATIVE ROLLS AND TILES

### ▶ MIPOLAM ACCORD EL7



3113 Manitoba



3111 Huron



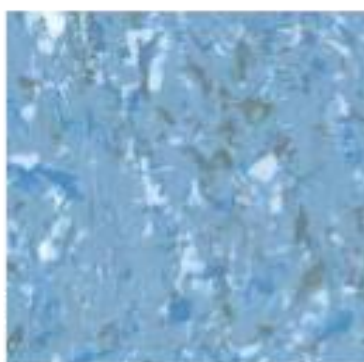
3147 Grunsee

New



3150 Thames

New



3116 Mälaren



3160 Balaton

### ▶ MIPOLAM ROBUST EL7



0003 Ivory



0002 Platinum



0112 Storm



0306 Green



0005 Steel



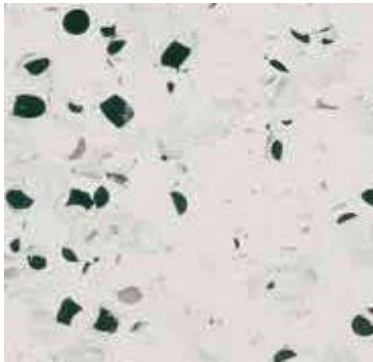
0013 Pewter

Compact sheet without foam backing - Compact tile without foam backing

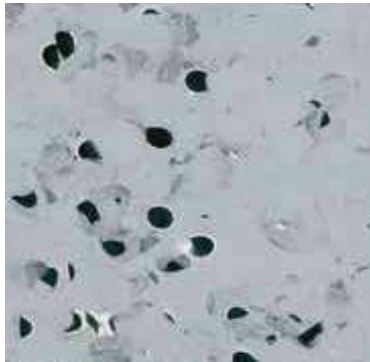
# CONDUCTIVE ROLLS AND TILES



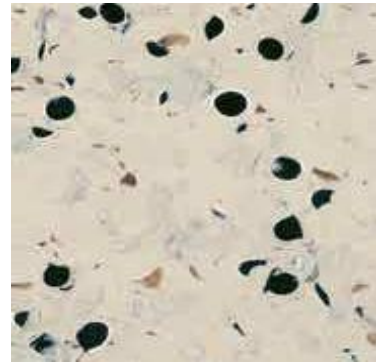
## ▶ MIPOLAM ELEGANCE EL5



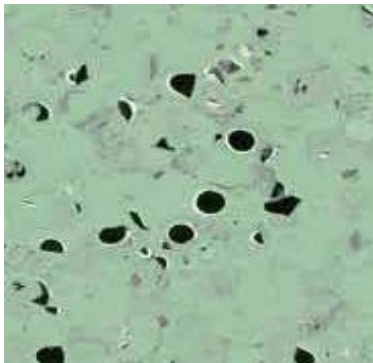
0350 Light Grey



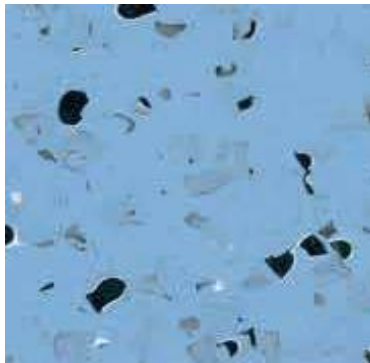
0352 Grey



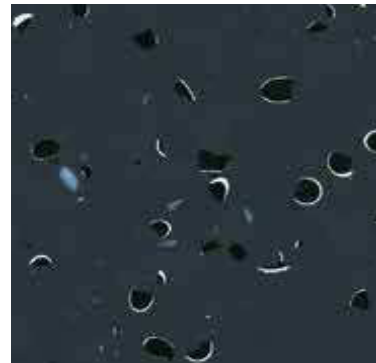
0353 Beige



0355 Green



0354 Blue



0351 Black

## ▶ MIPOLAM TECHNIC EL5



0635 White



0636 Grey



0640 Beige



0637 Light Blue



0638 Blue



0639 Green

The images of floorcoverings in this catalogue have been reproduced as faithfully as printing technology permits.

# PRODUCT DESCRIPTION

## MIPOLAM ELEGANCE EL5

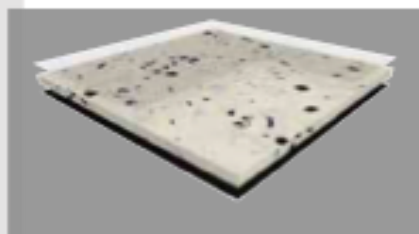


2 m

$10^5 \leq Rt \leq 10^6 \Omega$



100 % recyclable



**MIPOLAM ELEGANCE EL5** is a conductive flexible homogeneous vinyl floorcovering available in sheet. The 2 mm homogeneous material incorporates carbon encapsulated granules throughout its full thickness. It has a **conductive backing** to ensure optimal and consistent conductive properties throughout its full life expectancy.

This floorcovering is treated with **Evercare™**: the latest improvements in polyurethane surface treatment obtained by UV laser cross-linking. Evercare™ avoids stain of chemical products used in healthcare like betadine, eosin or anti-bacterial hand gel and increases the durability of the flooring.

This treatment has excellent maintenance characteristics; it requires no wax for life!

**MIPOLAM ELEGANCE EL5** acts as a continuous conductive  $10^5 \leq Rt \leq 10^6$ . It has permanent antistatic properties ( $\times 100$  V). The product has to be grounded with an ESD copper strip (cf. finishes) to meet its full performance.

The product is non-reactive to residual indentation with a value  $\leq 0,02$  mm EN ISO 24343-1 (EN 4320).

The flooring complies with the EN ISO 10581 (EN 438) (34-43) offering a group P wear rating suitable for heavy duty traffic areas and Bfl-s1 fire resistance.

The product is non-emissive of volatile organic compounds with  $< 10$   $\mu\text{g}/\text{m}^3$  (TVOC after 28 days ISO 16000-6).

## MIPOLAM TECHNIC EL5



608 x 608 mm

$10^5 \leq Rt \leq 10^6 \Omega$



100 % recyclable



**MIPOLAM TECHNIC EL5** is a conductive flexible homogeneous compacted vinyl floorcovering available in tiles.

The conductive carbon coated PVC pellets create a perfect conductive network for permanent conductive properties and antistatic properties ( $\times 100$  V) throughout its full life expectancy.

It acts as a continuous conductive  $10^5 \leq Rt \leq 10^6$  (EN 1081).

## MIPOLAM ACCORD EL7



2 m

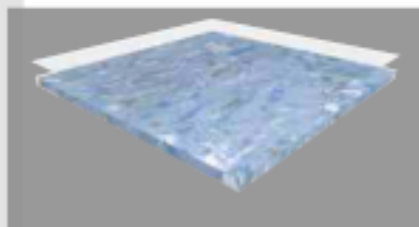


608 x 608 mm

$10^5 \leq Rt \leq 10^6 \Omega$



100 % recyclable



**MIPOLAM ACCORD EL7** is a dissipative flexible homogeneous vinyl floorcovering available in both sheet and tile form, calendered and compacted.

This floorcovering is treated with **Evercare™**: the latest improvements in polyurethane surface treatment obtained by UV laser cross-linking. Evercare™ avoids stain of chemical products used in healthcare like betadine, eosin or anti-bacterial hand gel and increases the durability of the flooring.

This treatment has excellent maintenance characteristics; it requires no wax for life!

**MIPOLAM ACCORD EL7** acts as a continuous dissipater  $10^5 \leq Rt \leq 10^6$ .

The product is non-reactive to residual indentation with a value  $\leq 0,02$  mm.

The flooring is a group P wear rating suitable for heavy duty traffic areas and Bfl-s1 fire resistance.

The product is non-emissive of volatile organic compounds with  $< 10$   $\mu\text{g}/\text{m}^3$  (TVOC after 28 days ISO 16000-6).

## MIPOLAM ROBUST EL7



2 m



608 x 608 mm

$10^5 \leq Rt \leq 10^6 \Omega$



100 % recyclable



**Mipolam ROBUST EL7** is a dissipative flexible homogeneous vinyl floorcovering available in both sheet and tile. Calendered and compacted. It acts as a continuous dissipater  $10^5 \leq Rt \leq 10^6$  (EN 1081).



Compact sheet without foam backing -



Compact tile without foam backing

# TECHNICAL DATA

	MIPOLAM ELEGANCE EL5	MIPOLAM TECHNIC EL5	MIPOLAM ACCORD EL7	MIPOLAM ROBUST EL7
--	-------------------------	------------------------	-----------------------	-----------------------

## DESCRIPTION

Total thickness	EN ISO 24346 [EN 428]	mm	2.00	2.00	2.00	2.00
	ASTM F386-02	inch	-	0.08	-	-
Weight	EN ISO 23997 [EN 430]	g/sq.m	3060	3800	3100	3300
Width/length of sheet	EN ISO 24341 [EN 426]	cm / lm	200 / 20	-	200 / 20	200 / 20
Tile size	EN ISO 24342 [EN 427]	mm	-	608 x 608	608 x 608	608 x 608
Number of tiles per package	-	-	-	20	20	20

## CLASSIFICATION

Standard / product specification	-	-	EN ISO 10581 [EN 649]	EN ISO 10581 [EN 649]	EN ISO 10581 [EN 649]	EN ISO 10581 [EN 649]
European classification	EN ISO 10874 [EN 685]	class	34-43	34-43	34-43	34-43
Fire rating	EN 13501-1	class	Bfl - s1	Bfl - s1	Bfl - s1	Bfl - s1
	EN 1081	Ohm	$10^4 \leq Rt \leq 10^6$	$10^4 \leq Rt \leq 10^6$	$10^4 \leq Rt \leq 10^8$	$10^6 \leq Rt \leq 10^8$
Electrical resistance <sup>(1)</sup>	IEC 61340-4-1	Ohm	$\leq 10^9$	$\leq 10^9$	-	-
	IEC 61340-4-5	Ohm	$\leq 10^9$	$\leq 10^9$	-	-
	ANSI / ESD-STM 7.1	Ohm	$\leq 10^9$	$2.5 \times 10^4 \leq Rt \leq 10^9$	-	-
Static electrical propensity	EN 1815	kV	< 2	< 2	< 2	< 2
	IEC 61340-4-5	V	$\leq 100$ <sup>(2)</sup>	$\leq 100$ <sup>(2)</sup>	-	-
Protection against electrostatic discharges	ESD S20.20	-	OK	OK	-	-
	IEC 61340-5-1	-	OK	OK	-	-
Slip resistance wet	DIN 51130	class	R9	-	R9	-






## PERFORMANCE

Wear resistance	EN 660.2	mm <sup>3</sup>	$\leq 4.0$	$\leq 4.0$	$\leq 4.0$	$\leq 7.5$
Wear group	NF 189	group	P	P	P	M
Type binder content	ISO 10581	type	I	II	II	II
Dimensional stability	EN ISO 23999 [EN 434]	%	$\leq 0.40$	$\leq 0.25$	Sheet $\leq 0.40$ Tile $\leq 0.25$	Sheet $\leq 0.40$ Tile $\leq 0.25$
Residual indentation	EN ISO 24343-1 [EN 433]	mm	$\approx 0.02$	$\approx 0.03$	$\approx 0.02$	$\approx 0.03$
Castor chair test (Type W )	ISO 4918 [EN 425]	-	OK	OK	OK	OK
Thermal conductivity	EN ISO 10456 [EN 12524]	W/(m.K)	0.25	0.25	0.25	0.25
Colour fastness	EN 20 105 - B02	degree	$\geq 6$	$\geq 6$	$\geq 6$	$\geq 6$
Surface treatment	-	-	Evercare™	-	Evercare™	-
Chemical products resistance	EN ISO 26987 [EN 423]	-	OK	OK	OK	OK

## ENVIRONMENT / INDOOR AIR QUALITY

TVOC after 28 days	ISO 16000-6	µg/m <sup>3</sup>	< 10	< 10	< 10	< 10
Certification	-	-	Floorscore®	-	Floorscore®	-

## CE MARKING

CE	EN 14041	-	  
	-	-	 

(1) Measured before installation

(2) Measured with ESD shoes (ABEBA and Uvex)

Important : please refer to GERFLOR installation guidelines – [www.gerflor.com](http://www.gerflor.com)

Product description and technical data sheet available in various languages. See our Gerflor Country websites.



Rubber leaves indelible stains on vinyl floorings: do not use mats with rubber backing and replace tubular furniture feet with those made of PVC or polyamide. Place mats of sufficient length at entrances to reduce outside sources of dirt.

**IMPORTANT:** The information contained in this document is valid from October 1st 2017 and is subject to change at any time without notice. In the context of constantly changing technology, our customers are responsible, prior to any use, for checking with us that this document is the version in force.

Installation and Maintenance Guidelines, Complementary ranges available on our Gerflor website.

# GTI EL5 BENEFITS



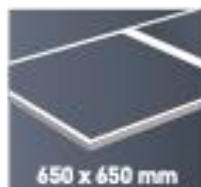
All the benefits of a GTI Tile with Evercare™ treated smooth surface and electro-conductive properties.

## ■ INTERLOCKING SYSTEM GTI EL5 CONNECT



OR

## ■ WELDED SQUARE FORMAT GTI EL5 CLEANTECH



Renovation solution

- Easy repairs with no special tools / Easy replacement





## Direct installation

- On existing floor (concrete, ceramic, epoxy resin, pvc, ...)  
or problem subfloors (asbestos subfloor, damp subfloor, ...)

## Fast & Easy Installation

- Up to 20 sqm / 215 sq. ft. per hour

## No shut down required

- No lost revenues + Time saving

## High Traffic Resistance

- Withstands heavy loads

## Durability

- Will not crack / will not blister / will not break

## Watertight System

- Hot welding with GTI EL5 CLEANTECH

## Electro-conductive properties

- $5 \times 10^4 \leq R_t \leq 10^6$  (EN1081)  
conductive properties throughout its full life expectancy
- Low static electrical propensity:  
< 2000 V (EN1815), <100 V (IEC 61340-4-5)



# GTI EL5

## CONDUCTIVE TILES

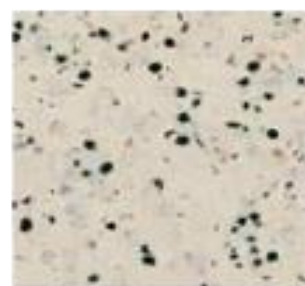
### ▶ GTI EL5 CLEANTECH



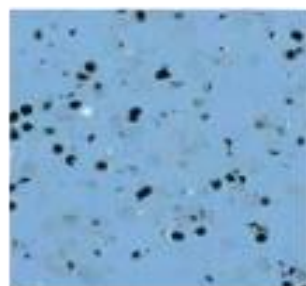
0350 Light Grey



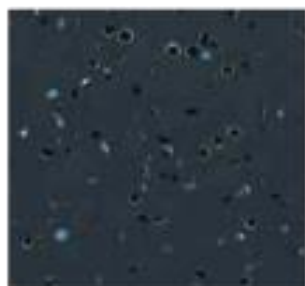
0352 Grey



0353 Beige

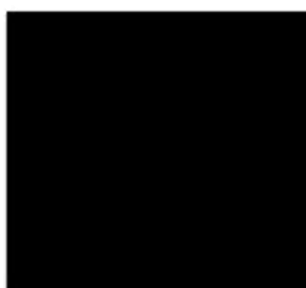


0354 Blue

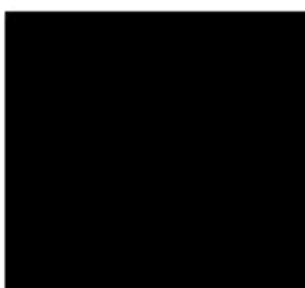


0351 Black

### ▶ GTI EL5 CONNECT



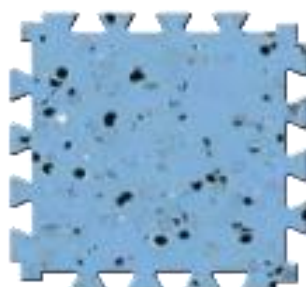
0350 Light Grey



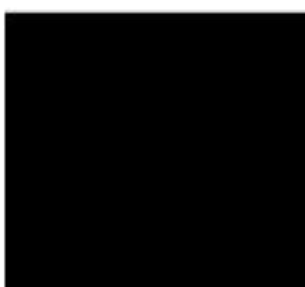
0352 Grey



0353 Beige



0354 Blue



0351 Black

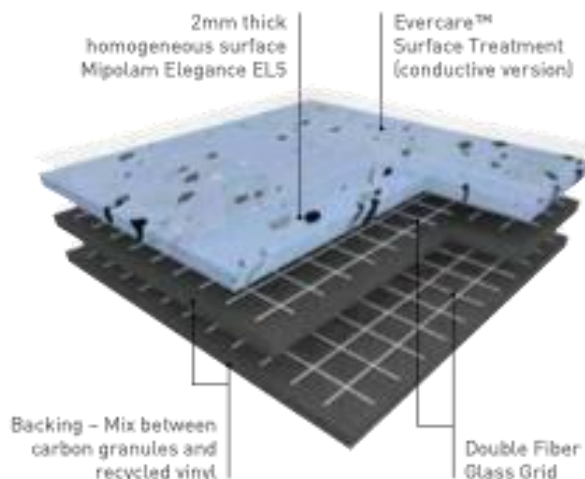


# PRODUCT DESCRIPTION

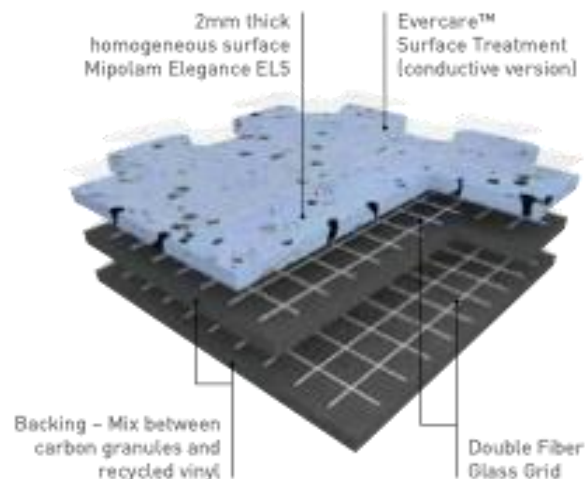
## ▶ GTI EL5

 CLEANTECH 650 x 650 mm	 CONNECT 635 x 635 mm	Removable	R9	Evercare™	 100 % recyclable
---	---	-----------	----	-----------	--

### CLEANTECH



### CONNECT



**GTI EL5 is a multi-layered looselay vinyl tile, 6 mm thick, reinforced with 2 glass fibre grids**

GTI EL5 tiles can be installed using interlocking system with dovetails (**GTI EL5 CONNECT**).

They are also available in **square format with welded joints** for clean environments and watertight systems requirements (**GTI EL5 CLEANTECH**).

GTI EL5 wearlayer is 2 mm homogeneous vinyl manufactured with continuous high pressure process, abrasion group P.

This floorcovering is treated with **Evercare™** technology: the latest improvements in polyurethane surface treatment obtained by UV laser cross-linking. Evercare™ offers **easy maintenance and resistance against stain** of chemical products used in industry and healthcare like betadine, eosin or anti-bacterial hand gel **and also bio-decontamination protocols**.

This treatment has excellent maintenance characteristics; it requires no wax for life!

The carbon encapsulated granules throughout its full thickness and the **conductive backing** and **conductive surface treatment** ensure optimal and consistent conductive properties throughout its full life expectancy.

- $5 \times 10^4 \leq Rt \leq 10^4$  according to **EN 1081**
- $Rt \leq 10^4$  according to **IEC 61340-4-1**

It has permanent antistatic properties.

- $< 2000V$  according to **EN 1815**
- $< 100V$  according to **IEC 61340-4-5**

**The product is non-emissive of volatile organic compounds with  $< 10 \mu\text{g}/\text{m}^3$  (TVOC after 28 days ISO 16000-6).**

Finishes: GTI EL5 ACCESS (access ramp), GTI EL5 CORNER (corner finishes), GTI EL5 CLEANTECH COVING (COVING CORNER IN and COVING CORNER OUT) and conductive welding rods (GTI EL5 CLEANTECH WELDING RODS).

# TECHNICAL DATA

DESCRIPTION			GTI EL5 CONNECT	GTI EL5 CLEANTECH
	Total thickness	EN ISO 24346 [EN 428]	mm	6.00
Wearlayer thickness	EN ISO 24340 [EN 429]	mm	2	2
Weight	EN ISO 23997 [EN 430]	g/m <sup>2</sup>	9240	9240
Size	EN ISO 24342 [EN 427]	mm	635 x 635	650 x 650

## CLASSIFICATION

Norm / Product specification	-	-	EN ISO 10582 [EN 649]	EN ISO 10582 [EN 649]
European classification	EN ISO 10874 [EN 685]	class	34-43	34-43
Fire rating	EN 13 501-1	class	B <sub>fl</sub> -s1	B <sub>fl</sub> -s1
Electrical resistance <sup>(1)</sup>	EN 1081	Ω	5 x 10 <sup>4</sup> ≤ Rt ≤ 10 <sup>6</sup>	5 x 10 <sup>4</sup> ≤ Rt ≤ 10 <sup>6</sup>
	IEC 61.340-4-1	Ω	≤ 10 <sup>9</sup>	≤ 10 <sup>9</sup>
	IEC 61340-4-5	Ω	≤ 10 <sup>9</sup>	≤ 10 <sup>9</sup>
	ANSI/ESD STM 7.1	Ω	≤ 10 <sup>9</sup>	≤ 10 <sup>9</sup>
Static electrical propensity	EN 1815	kV	< 2	< 2
	IEC 61340-4-5	V	≤ 100 <sup>(2)</sup>	≤ 100 <sup>(2)</sup>
Protection against electrostatic discharges	ESD S20.20	-	OK	OK
	IEC 61340-5-1	-	OK	OK
Slip resistance wet: ramp test with oil	DIN 51 130	class	R9	R9

## PERFORMANCES

Wear resistance	EN 660.2	mm <sup>3</sup>	≤ 4	≤ 4
Wear group	NF 189	group	P	P
Type Binder content	ISO 10582	type	I	I
Dimensional stability	EN ISO 23999 [EN 434]	%	≤ 0.25	≤ 0.25
Shore hardness	EN ISO 868	Hd	≥ 90	≥ 90
Castor chair test (type W)	ISO 4918 [EN 425]	-	OK	OK
Thermal conductivity	EN ISO 10456 [EN12524]	W/(m.K)	0.25	0.25
Colour fastness	EN 20 105 - B02	degree	≥ 6	≥ 6
Surface treatment	-	-	Evercare™	Evercare™
Chemical product resistance	EN ISO 26987 [EN 423]	class	OK	OK

## ENVIRONMENT / INDOOR AIR QUALITY

TVOC after 28 days	ISO 16000-6	µg / m <sup>3</sup>	<10	<10
Certification	-	-	Floorscore®	Floorscore®

## CE MARKING

CE	EN 14041	  
		

[1] Measured before installation

[2] Measured with ESD shoes (type ABEBBA and Uvex)

Product description and technical data sheet available in various languages. See our Gerflor Country websites.

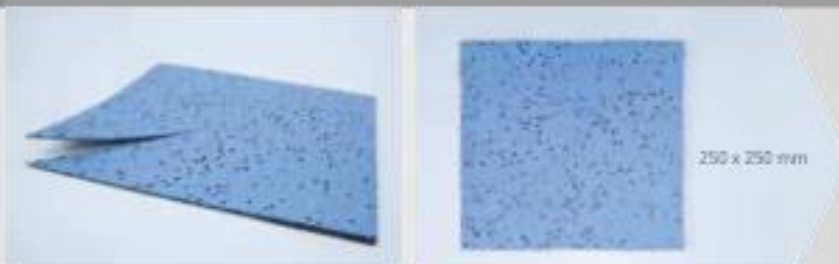


Rubber leaves indelible stains on vinyl floorings: do not use mats with rubber backing and replace tubular furniture feet with those made of PVC or polyamide. Place mats of sufficient length at entrances to reduce outside sources of dirt.

Installation and Maintenance Guidelines, Complementary ranges available on our Gerflor website.

**IMPORTANT:** The information contained in this document is valid from October 1st 2017 and is subject to change at any time without notice. In the context of constantly changing technology, our customers are responsible, prior to any use, for checking with us that this document is the version in force.

# GTI EL5 FINISHES



GTI EL5 CLEANTECH - COVING CORNER OUT\*



GTI EL5 CLEANTECH - COVING CORNER IN\*



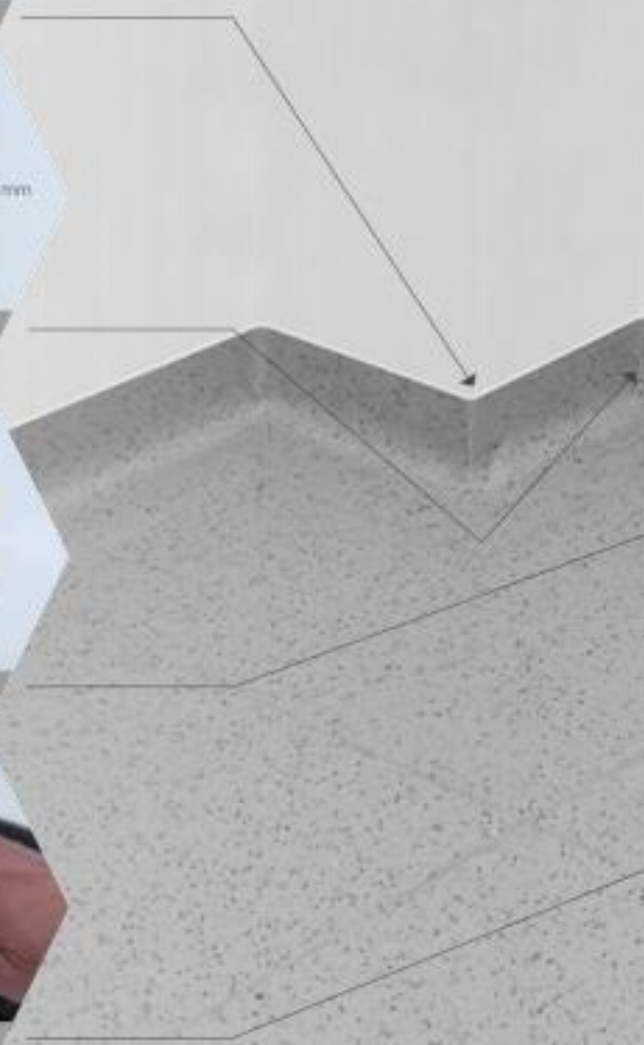
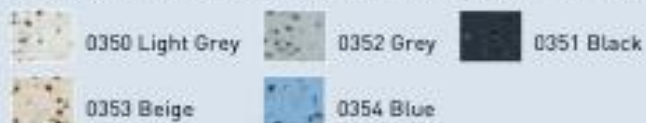
GTI EL5 CLEANTECH - COVING\*



GTI EL5 CLEANTECH - WELDING CONDUCTIVE ROD

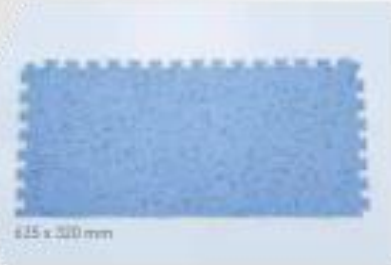
**WARNING:** GTI EL5 welding rods surface is black. The colour will be revealed when the installer cuts and trims the welding rods.

\* All these finishes are available with following colour references:





ESD COPPER STRIP



635 x 320 mm



GTI ELS CONNECT - ACCESS\*



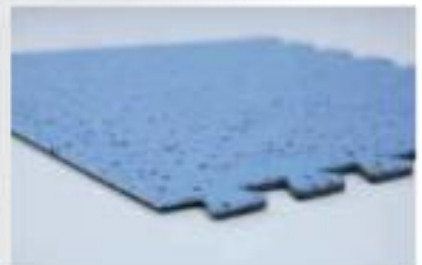
650 x 320 mm



GTI ELS CLEANTECH - ACCESS\*



320 x 320 mm



GTI ELS CONNECT - CORNER\*



320 x 320 mm



GTI ELS CLEANTECH - CORNER\*

# ESD FINISHES

## CLEAN CORNER SYSTEM



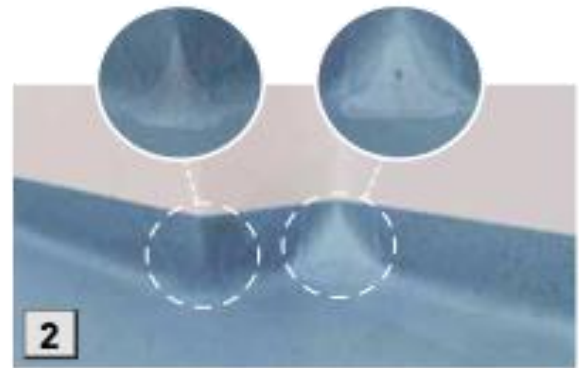
### CLEAN CORNER SYSTEM

#### AN INNOVATIVE CORNER SYSTEM

Contamination control in technical platforms and clean rooms is an ongoing issue.

Corners, in particular, are the focal point of most negligence in respect of hygiene rules:

- With ultra-resistant and versatile profiles (picture 1)
- **Clean Corner System** can be used for all your projects with a perfect result (picture 2).



#### WATERTIGHT

- Compliant with GMP
- Suitable for E2 and E3 zones
- Easy coving
- Limited and easy welding



#### RESISTANT & DURABLE

- Ultra-resistant bi-material corner profiles



#### CLEAN & HYGIENE

- Quick and easy cleaning and decontamination
- Easy manoeuvring of twist upright vacuum cleaner
- No blind spot



#### VERSATILE

- Suitable for all Gerflor floors
- Suitable for all skirting heights (7 to 15 cm)
- Suitable for all cove formers (20 x 20 mm to 38 x 38 mm)
- Suitable for all angles (85° to 95°) with or without coving sections



#### ATTRACTIVE

- Neat and uniform design for all your corners

#### Patent pending



Profile for external corners

Product code: 058R



Profile for internal corners

Product code: 058S



Installation templates kit

Product code: 058T

# ESD FINISHES

## CAPPING STRIP CLIP SYSTEM

Product code: 0486



**Rigid clipped finishing profile with 2 flexible lips**  
Capping strip that covers the skirting



**Packaging:**  
20 x 3 lm strips.

## FLEXIBLE FULL COVE FORMER

Product code: 0488



**PVC profile combining the cover former and the capping strip into a single product.**  
Adapted to the hospital sector and any room requiring a waterproof skirting.



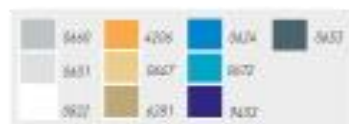
**Packaging:**  
15 x 3 lm strips.

## FULL COVE FORMER CLIP-SYSTEM

Product code: 0487



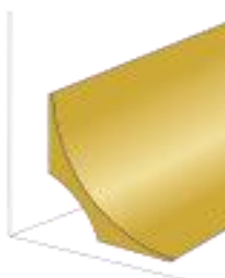
**PVC profile combining the cover former and the capping strip into a single product.**  
Adapted to the hospital sector and any room requiring a waterproof skirting.



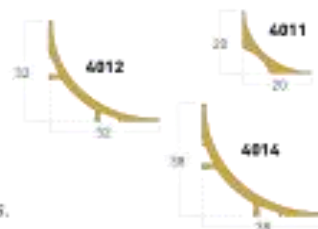
**Packaging:**  
20 x 3 lm strips.

## PVC COVE FORMER

Product code: 4011 - 4012 - 4014



This accessory allows the floor-wall cove to be formed



**Packaging:**  
20 x 2 lm strips.

## WELD RODS

Product code: 0585

**Welding rod and flooring matching tool**  
<http://www.gerflor.com/servicesprofessionals/welding-rods-matching.html>



Ø 4 mm



## ESD COPPER STRIP

Product code: 0586 0001



EXCLUSIVE PATENTED TECHNOLOGY BY GERFLOR

THE BEST CHEMICAL STAIN RESISTANCE SURFACE TREATMENT

EVERCARE™ BY GERFLOR :  
Treatment durability



Gerflor:  
Even thickness



100% non-porous  
surface  
Water-repellent  
effect

Other non-treated floor covering



Missing treatment  
and uneven  
thickness



Non-treated  
product

SIMPLE & EASY STAIN REMOVAL



USER'S BENEFITS

Easy maintenance  
Stain barrier  
Chemical resistance

No wax for life

Cost-effective maintenance

- 80% less water and detergent use for cleaning
- 30% savings on maintenance costs

# ECO-RESPONSIBLE SOLUTIONS

## LESS SPEAKING FOR MORE ACTION



### COMPOSITION

- **100% REACH** compliant
- **FREE** of formaldehyde
- **FREE** of heavy metals
- **FREE** of solvent



### INSTALLATION

- **Innovative adhesive free installation systems**



### RECYCLED CONTENT

- **25%** average recycled content
- **100% REACH compliant** recycled content



### LIFE CYCLE ANALYSIS

- **Eco-designed** according to a product specific Life Cycle Analysis
- **Manufactured in an ISO 14001 and ISO 50001** certified site
- **Contribution to many Green Building Schemes** (LEED, HQE, BREEAM...)
- **Exclusive surface treatments** to reduce drastically the use of chemical product and water and ensure the lowest environmental impact



### RECYCLING

- **100% recyclable product**



### INDOOR AIR QUALITY

- **TVOC emissions 10 times better than norms requirements** (TVOC < 10 µg/m³ after 28 days)
- **TVOC < 10 µg/m³ after 28 days** for all products treated Evercare™
- **Floorscore certified**
- No formaldehyde **emission**



### WELLNESS

- **Safety:** Anti slip performance
- **Comfort:** Walking comfort and impact noise reduction

## GERFLOR, ECO-RESPONSIBLE SOLUTIONS



**COMPOSITION**  
100% REACH compliant  
FREE of formaldehyde  
FREE of heavy metals  
FREE of solvent



**RECYCLED CONTENT**  
25% average recycled content  
100% REACH compliant recycled content



**RECYCLABILITY**  
100% recyclable product



**INDOOR AIR QUALITY**  
TVOC emissions between 10 and 100 times better than norms requirements  
Floorscore certified  
No formaldehyde emission



**INSTALLATION**  
Innovative adhesive free installation systems



**LCA**  
- Eco-designed according to a product specific Life Cycle Analysis  
- Manufactured in an Iso 14001 and Iso 50001 certified site  
- Contribution to many Green Building Schemes (LEED, HQE, BREEAM...)



**WELLNESS**  
Safety: Antislip performance  
Comfort: Walking comfort and impact noise reduction

**Gerflor**  
theflooringgroup